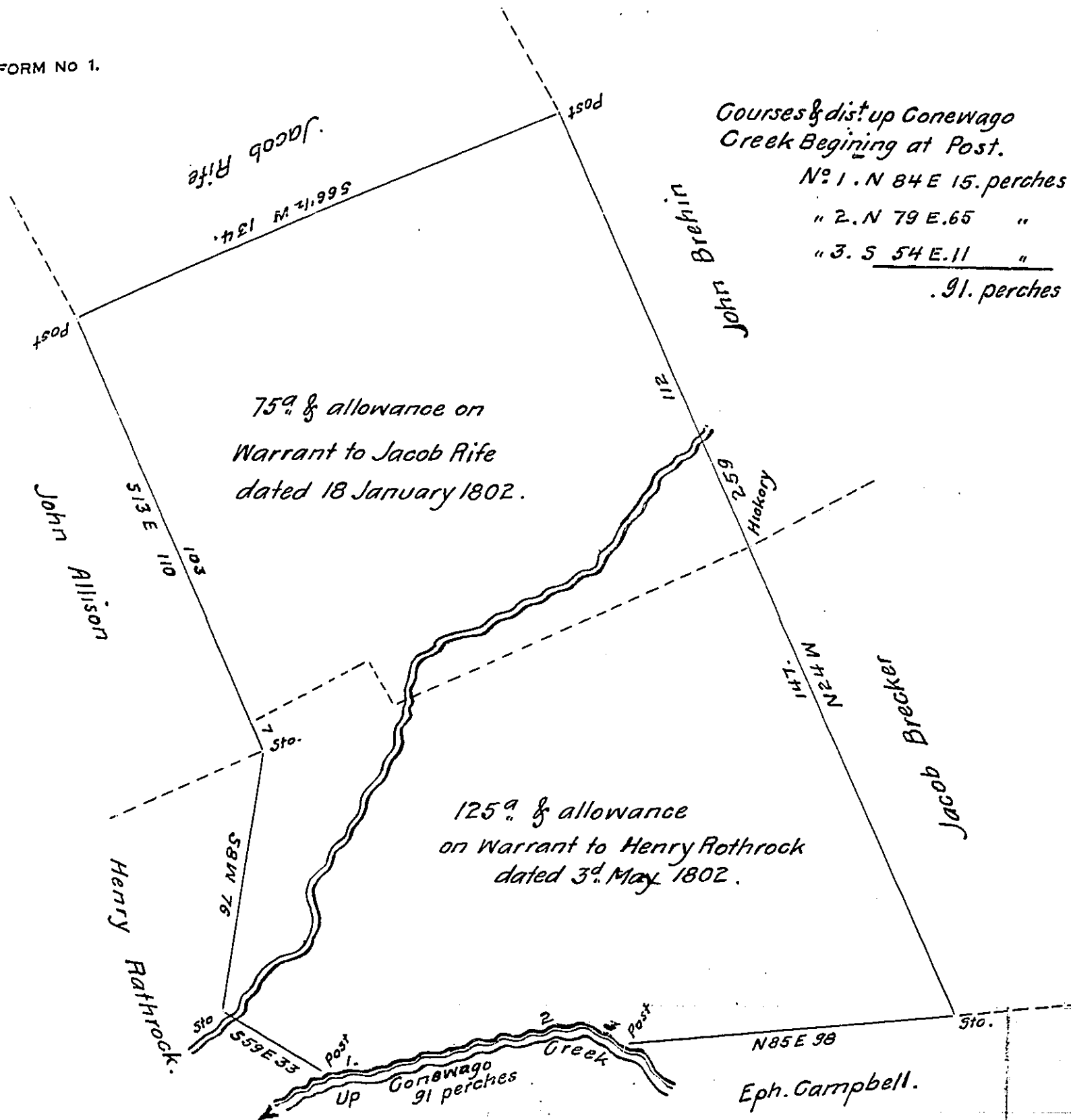


FORM NO 1.



Courses & dist up Conewago  
Creek Beginning at Post.  
 N: 1. N 84 E 15. perches  
 " 2. N 79 E. 65 "  
 " 3. S 54 E. 11 "  
 . 91. perches

75<sup>a</sup> & allowance on  
Warrant to Jacob Rife  
dated 18 January 1802.

125<sup>a</sup> & allowance  
on Warrant to Henry Rothrock  
dated 3<sup>d</sup> May 1802.

Surveyed July 15. 1833. on Warrant to James Allison situate in Derry  
township Dauphin County Containing two hundred acres and allowance warrant  
dated 25 February 1744. ~  
 To Jacob Spangler Esqr }  
 Surveyor Genl. }

John Davies Contractor

Note. ~ the whole of the above Survey is included in two Surveys one  
Containing 125<sup>a</sup> & allowance on Warrant to Henry Rothrock ~ The  
other 75<sup>a</sup> & allowance on Warrant to Jacob Rife on Warrant dated  
dated 18 January 1802.

Jacob Rife Patd J. Davies  
 Rothrock Patd

IN TESTIMONY that the above is a copy of the original remaining on file in  
the Department of Internal Affairs of Pennsylvania, made  
conformably to an Act of Assembly approved the 16th day of  
February, 1833, I have hereunto set my Hand and caused  
the Seal of said Department to be affixed at Harrisburg,  
this thirtieth day of November 1908

*Henry Houch*  
 Secretary of Internal Affairs.